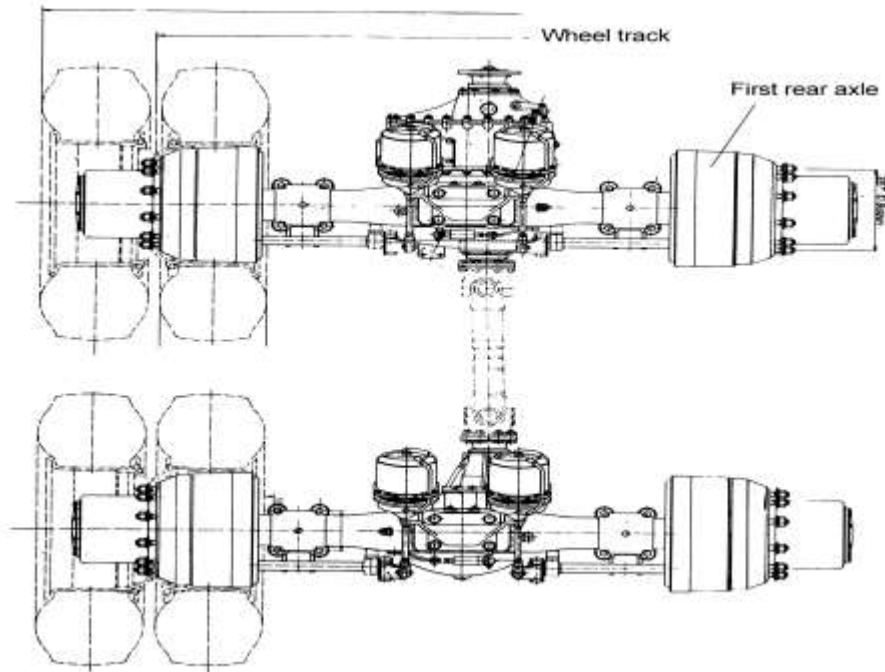


4. HC16驱动桥/HC16 Rear Drive Axles

序号/ No.	名 称 / Designation		页 码 / Page No.
4,01	双后驱动桥总成//Rear Tandem Drive Axles	-----	1
4,02	中桥驱动装置/1st Rear Axle Drive	-----	2
4,03	后桥驱动装置/2nd Rear Axle Drive	-----	8
4,04	中桥桥壳/1st Rear Axle Housing	-----	11
4,05	后桥桥壳/ Rear Axle Housing	-----	13
4,06	三段式铸造后桥轮毂及制动器/Rear Axle Hub and Brake	-----	15
4,07	三段式铸造后桥轮毂及制动器/Rear Axle Hub and Brake	-----	20

4.01 双后驱动桥总成/Rear Tandem Drive Axles



4.01 双后驱动桥总成/Rear Tandem Drive Axles

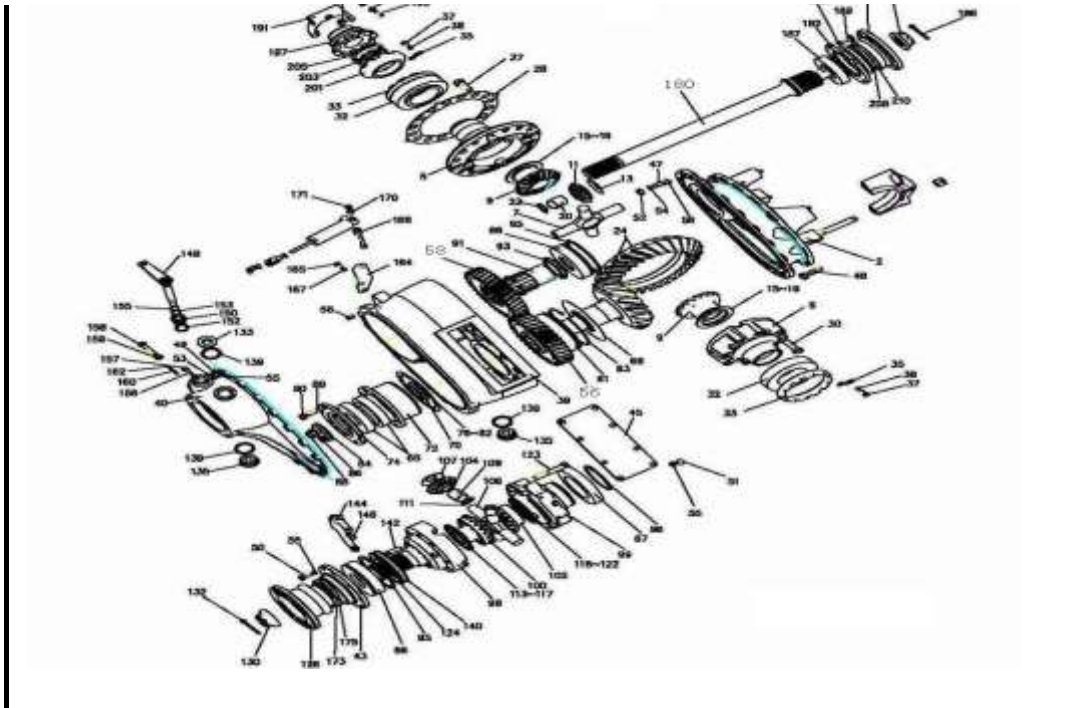
序号 No.	零部件图号 Part No.	名称	Part Name	数量 Qty	备注 Remark
0	AH71131400975	三段式铸造双桥(QT)(4.8)	Rear tandem drive axles	1	
1	AH71131541972	三段式铸造中桥(QT)(4.8)	1st rear axle ass.	1	
2	AH71131551972	三段式铸造后桥(QT)(4.8)	2nd rear axle ass.	1	

主要配置/Main Configurations

1		型号:HC16	Modle:HC16		
2		铸造桥壳	Casting axle housing		
3		主减速比4.8	Reduction ratio 4.8		
4		输入法兰Φ180mm	Input flange Φ180mm		
5		轮距1850mm	Wheel track 1850mm		

4.02 中桥驱动装置 (i=4.8, XSΦ180, 输出XSΦ165, 铸造桥用) /Drive of 1st Rear Axle



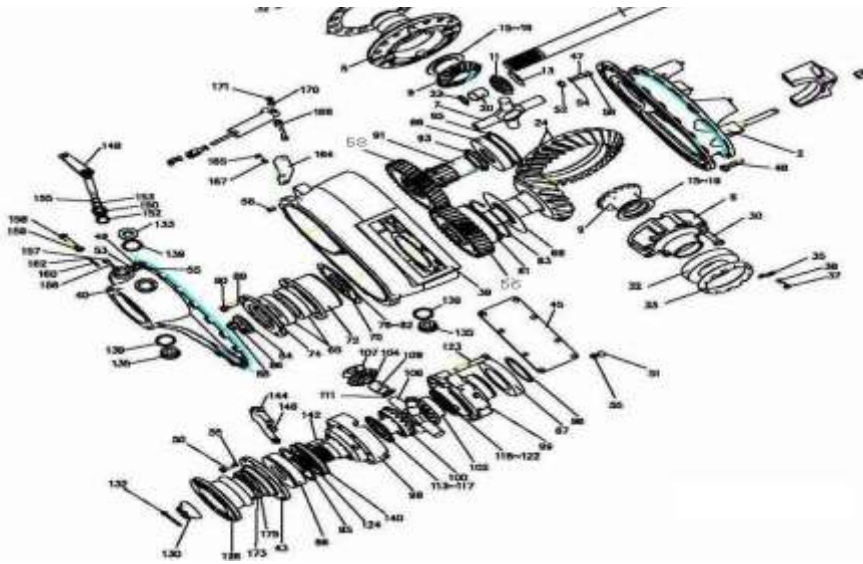


4.02 中桥驱动装置 (i=4.8, XS Φ 180, 输出XS Φ 165, 铸造桥用) /Drive of 1st Rear Axle

序号 No.	零部件图号 Part No.	名称	Part Name	数量 Qty	备注 Remark
1	AZ9231320734	中桥中段 (i=4.8, XS φ 180)	Middle of 1st rear axle	1	
2	WG9014320120	主减速器壳 (中桥)	Final drive housing	1	
4	AZ9231320272	差速器壳	Differential housing	1	
5	AZ9231320163	差速器壳 (左)	Differential housing	1	
6	AZ9231320164	差速器壳 (右)	Differential housing	1	
7	AZ9231320150	十字轴	Cross-axis	1	
8	190007991779	106号二硫化钼 (M0)	Molybdenum disulfide	7	
9	WG9231320151	半轴齿轮	Gear	2	
11	WG9231320152	行星齿轮	Gear	4	
13	WG9231320153	行星齿轮垫片	Shim	4	
15	AZ9231320154	调整垫片	Shim	1	
16	AZ9231320155	调整垫片	Shim	1	
17	AZ9231320156	调整垫片	Shim	1	
18	AZ9231320157	调整垫片	Shim	1	
19	AZ9231320158	调整垫片	Shim	1	
20	WG9231320159	衬套	Bushing	4	
22	WG9231320160	衬套挡圈	Ring	4	
24	WG9114320251	锥齿轮副 28/17	Bevel gear & ring gear asse	1	
27	Q151B1635TF2	六角头螺栓	Bolt	16	
28	WG9114320003	锁片-从动锥齿轮螺栓	Shim	1	

4.02 中桥驱动装置 (i=4.8, XS Φ 180, 输出XS Φ 165, 铸造桥用) /Drive of 1st Rear Axle

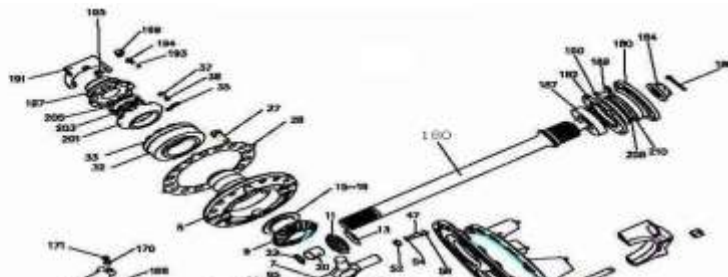


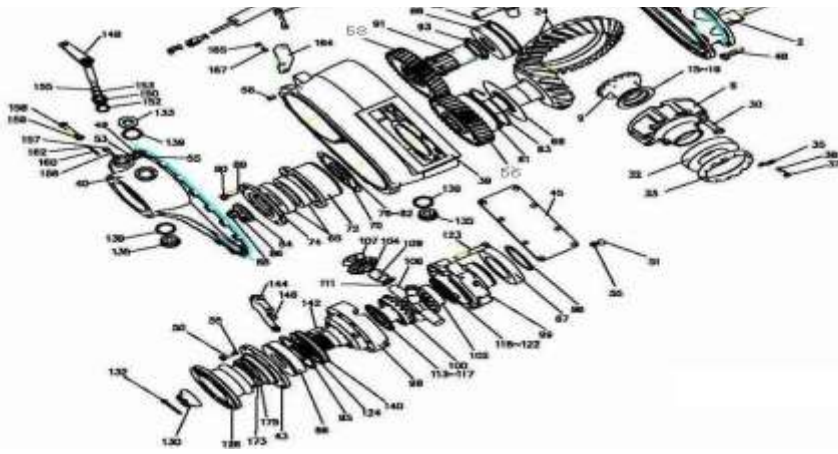


4.02 中桥驱动装置 (i=4.8, XSΦ180, 输出XSΦ165, 铸造桥用) /Drive of 1st Rear Axle

序号 No.	零部件图号 Part No.	名称	Part Name	数量 Qty	备注 Remark
30	WG9231320169	六角头螺栓	Bolt	8	
32	190003326148	圆锥滚子轴承 32216 GB	Tapered roller bearing	2	
33	WG3809320159	差速器轴承调整螺母	Nut	2	
35	WG79000320027	止动片	Shim	2	
37	Q150B0816	六角头螺栓	Bolt	2	
38	Q40308	弹簧垫圈	Spring washer	2	
39	AZ9231320259	过桥箱	Bridge gear box	1	
40	AZ9231320264	过桥箱盖	Cover	1	
41	AZ9231320260	过桥箱盖	Cover	1	
42	190003989279	碗形堵塞	Plug	1	
43	WG9014320175	端盖	Cover	1	
44	WG9014320118	接油板总成	Plate	1	
46	190003813628	双头螺柱	Stud	14	
47	Q1201225F3	双头螺柱	Stud	4	
48	Q1201028F3	双头螺柱	Stud	18	
49	Q150B1025	六角头螺栓	Bolt	8	
50	Q150B1020Q	六角头螺栓	Bolt	8	
51	Q340B12	I型六角头螺母	Nut	18	
52	Q340B10	六角螺母	Nut	18	
53	Q40312	弹簧垫圈	Spring washer	18	

4.02 中桥驱动装置 (i=4.8, XSΦ180, 输出XSΦ165, 铸造桥用) /Drive of 1st Rear Axle

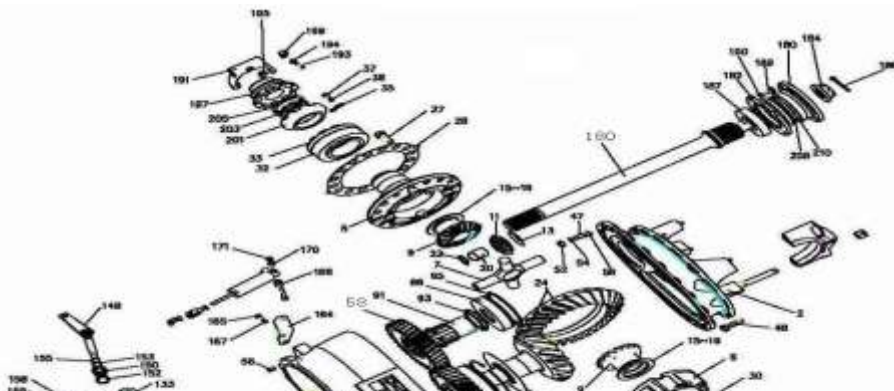


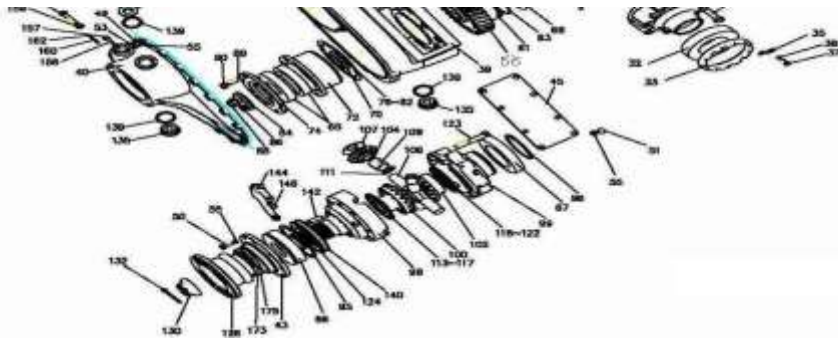


4.02 中桥驱动装置 (i=4.8, XS Φ180, 输出XS Φ165, 铸造桥用) /Drive of 1st Rear Axle

序号 No.	零部件图号 Part No.	名称	Part Name	数量 Qty	备注 Remark
54	Q40310	弹簧垫圈	Spring washer	34	
55	Q5211016	园柱销	Pin	4	
56	WG9014320208	从动圆柱齿轮z=26	Driven bevel gear	1	
58	WG9014320209	主动圆柱齿轮z=31	Drive bevel gear	1	
60	WG9014320257	滚柱轴承	Cylindrical roller bearing	1	
62	WG9014320256	钢丝档圈	Circlip	1	
64	190003326333	圆锥滚子轴承 31311 GB	Tapered roller bearing	2	
65	190003311543	有止动槽的向心球轴承	Ball bearing	2	
66	190003310239	带防尘盖深沟球轴承 60	Ball bearing	1	
67	WG9014320174	挡油片	Shim	1	
69	WG9014320140	隔圈	Spacer	1	
71	WG9014320129	轴承座	Bearing cage	1	
73	WG9014320128	轴承外环压板	Plate	1	
75	WG9014320131	调整垫片	Shim	1	
77	WG9014320132	调整垫片	Shim	1	
79	WG9014320133	调整垫片	Shim	1	
81	WG9014320134	调整垫片	Shim	1	
83	WG780 320088	轴承压板	Plate	1	
85	WG9114320002	防松锁片--轴承压板紧固	Shim	1	
87	Q150B1430TF2	六角头螺栓	Bolt	3	

4.02 中桥驱动装置 (i=4.8, XS Φ180, 输出XS Φ165, 铸造桥用) /Drive of 1st Rear Axle

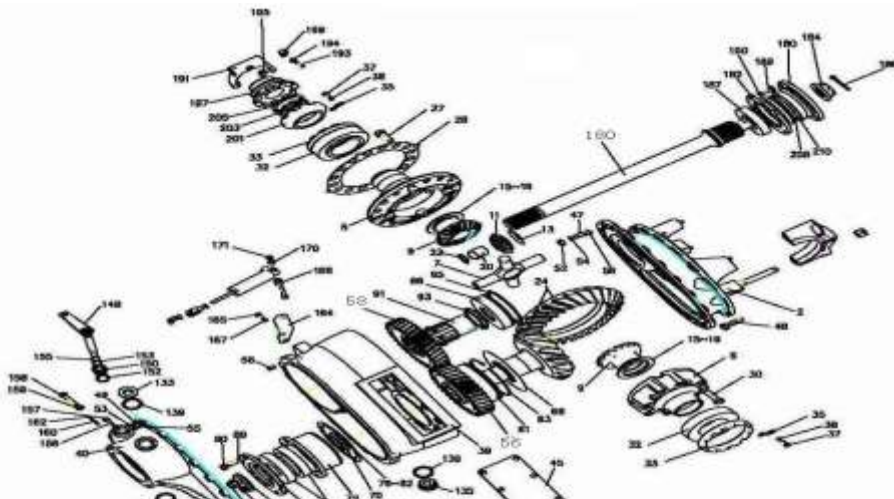


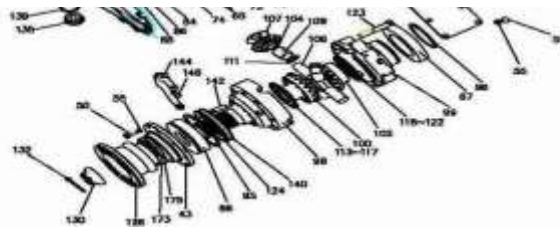


4.02 中桥驱动装置 (i=4.8, XS Φ180, 输出XS Φ165, 铸造桥用) /Drive of 1st Rear Axle

序号	零部件图号	名称	Part Name	数量	备注
No.	Part No.			Qty	Remark
88	190003813543	双头螺栓	Stud	8	
89	Q33210	2型全金属六角锁紧螺母	Nut	8	
90	WG9014320135	空心轴	Shaft	1	
92	WG9012250031	开槽园螺母	Nut	1	
94	Q433130	轴用压扁钢丝挡圈	Circlip	2	
95	190003933580	轴用弹性挡圈	Circlip	1	
96	AZ9231320271	差速器壳	Differential housing	1	
97	AZ9231320068	差速器壳 (前)	Differential housing	1	
98	AZ9231320069	差速器壳 (后)	Differential housing	1	
99	WG9231320225	前半轴齿轮	Gear	1	
101	WG9231320226	后半轴齿轮	Gear	1	
103	WG9231320227	行星齿轮	Gear	4	
105	AZ9231320223	十字轴	Cross-axis	1	
106	WG9231320224	行星齿轮垫片	Shim	4	
108	WG9231320221	衬套	Bushing	4	
110	WG9231320222	衬套挡圈	Ring	4	
112	AZ9231320091	半轴齿轮 (前) 垫片	Shim	1	
113	AZ9231320092	半轴齿轮 (前) 垫片	Shim	1	
114	AZ9231320093	半轴齿轮 (前) 垫片	Shim	1	
115	AZ9231320094	半轴齿轮 (前) 垫片	Shim	1	

4.02 中桥驱动装置 (i=4.8, XS Φ180, 输出XS Φ165, 铸造桥用) /Drive of 1st Rear Axle

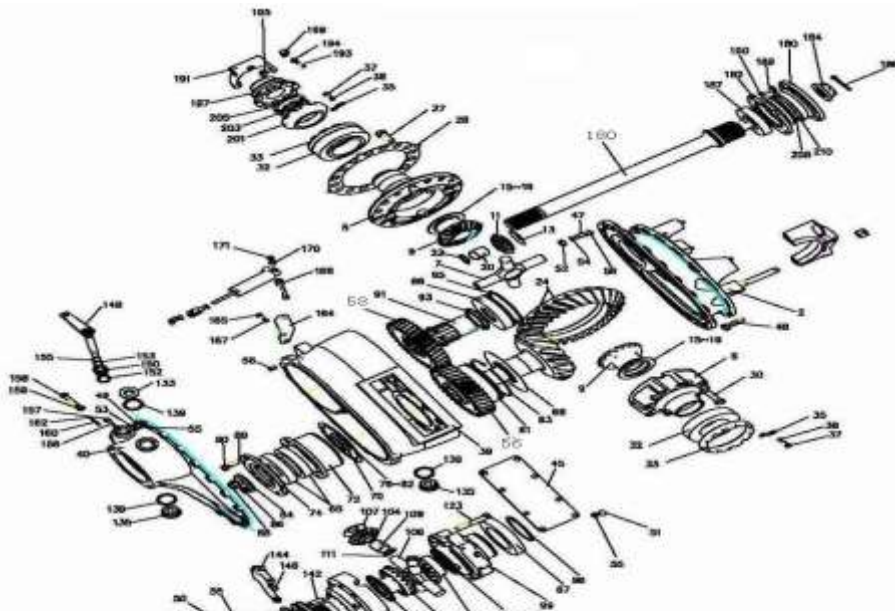




4.02 中桥驱动装置 (i=4.8, XS Φ180, 输出XS Φ165, 铸造桥用) /Drive of 1st Rear Axle

序号 No.	零部件图号 Part No.	名称	Part Name	数量 Qty	备注 Remark
116	AZ9231320095	半轴齿轮(前)垫片	Shim	1	
117	AZ9231320096	半轴齿轮(后)垫片	Shim	1	
118	AZ9231320097	半轴齿轮(后)垫片	Shim	1	
119	AZ9231320098	半轴齿轮(后)垫片	Shim	1	
120	AZ9231320099	半轴齿轮(后)垫片	Shim	1	
121	AZ9231320100	半轴齿轮(后)垫片	Shim	1	
122	Q151C1280TF2	六角头螺栓	Bolt	12	
123	WG9014320061	轴间差速器壳垫片	Shim	1	
125	AZ9231320014	XS φ 180凸缘总成	Flange assembly	1	
126	AZ9231320015	XS φ 180凸缘	Flange	1	
127	WG79000320012	防尘罩	Dust shield	1	
129	WG79000320013	凸缘螺母	Nut	1	
131	Q5005055	开口销	Pin	1	
132	WG81500010163	螺塞	Plug	1	
134	1586 33 15	磁性螺塞总成	Plug	2	
135	WG586 33 16	放油螺塞	Plug	1	
137	JQ61216-2	磁芯	Magnet	1	
138	Q72336	密封垫圈--Q72336铝L1M	Gasket	3	
139	WG288 320105	差速锁锁环	Ring	1	
141	WG288 320106	差速锁销	Pin	10	

4.02 中桥驱动装置 (i=4.8, XS Φ180, 输出XS Φ165, 铸造桥用) /Drive of 1st Rear Axle

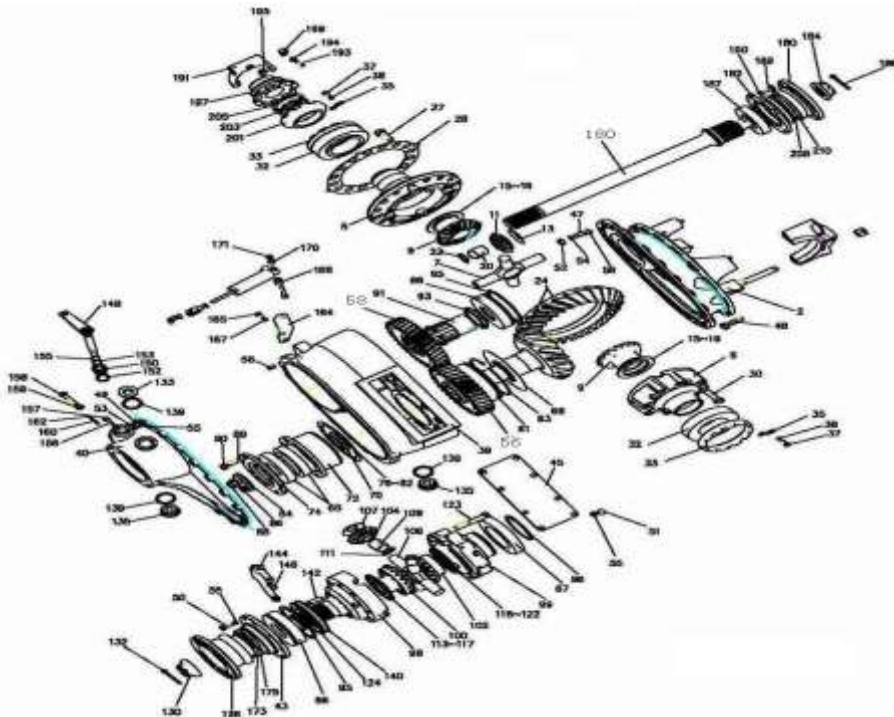




4.02 中桥驱动装置 (i=4.8, XS Φ180, 输出XS Φ165, 铸造桥用) /Drive of 1st Rear Axle

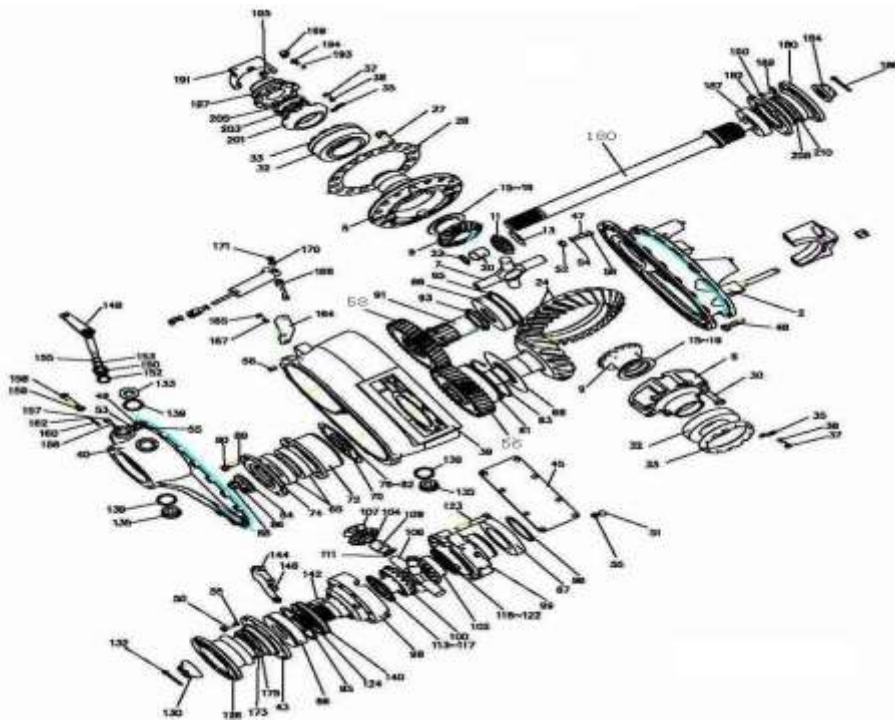
序号 No.	零部件图号 Part No.	名称	Part Name	数量 Qty	备注 Remark
143	WG9014320053	拨叉	Fork	1	
145	WG1800 320077	拨叉活动块	Block	2	
147	WG9014320076	差速锁摇臂总成	Rocker arm assembly	1	
149	WG2700 320037	衬套	Bushing	1	
151	AZ9231320038	O形圈 (26502240GB3452)	O-ring	1	
152	WG288 730062	O型密封圈	O-ring	1	
154	190003933072	轴用弹性挡圈	Circlip	1	
155	190003902070	开槽长园柱端紧定螺—螺	Screw	1	
156	Q340B08	1型六角螺母	Nut	1	
157	Q150B1050Q	六角头螺栓	Bolt	1	
158	Q340B10	六角螺母	Nut	1	
159	WG69000330008	销	Pin	1	
161	Q43705	轴用钢丝挡圈	Circlip	1	
162	AZ9231320262	托架总成	Bracket assembly	1	
163	AZ9231320263	托架	Bracket	1	
164	Q150B0865	六角头螺栓	Bolt	1	
165	Q150B0818	六角头螺栓	Bolt	2	
166	Q40308	弹簧垫圈	Spring washer	2	
167	WG61000060072	隔套	Sleeve	1	
169	Q40108	平垫圈	Washer	1	

4.02 中桥驱动装置 (i=4.8, XS Φ180, 输出XS Φ165, 铸造桥用) /Drive of 1st Rear Axle



4.02 中桥驱动装置 (i=4.8, XSΦ180, 输出XSΦ165, 铸造桥用) /Drive of 1st Rear Axle					
序号	零部件图号	名称	Part Name	数量	备注
No.	Part No.			Qty	Remark
170	Q33208	2型全金属六角锁紧螺母	Nut	1	
172	WG9231320026	轴密封圈	Gasket	1	
175	WG9231328772	轴密封圈	Gasket	1	
178	WG2297Y4835	铭牌	Name plate	1	
180	AZ9231320261	贯通轴	Through shaft	1	
181	WG9231320205	Φ165输出凸缘总成	Flange assembly	1	
183	WG9231320141	轴承座	Bearing cage	1	
185	WG79000320013	凸缘螺母	Nut	1	
187	Q5005055	开口销	Pin	1	
188	WG9231326212	双列圆锥滚子轴承	Tapered roller bearing	1	
190	Q150B1030	六角头螺栓	Bolt	6	
191	Q40310	弹簧垫圈	Spring washer	6	
192	WG9012320014	拨叉	Fork	1	
194	Q2800825	开槽锥端紧定螺钉	Screw	1	
195	Q340B08	1型六角螺母	Nut	1	
196	WG1800 320077	拨叉活动块	Block	2	
198	WG3809320156	滑动啮合套	Sleeve	1	
200	WG9231320023	弯板	Plate	1	
202	WG3809320155	固定啮合套	Sleeve	1	
204	WG3809320158	锁止垫片	Shim	1	

4.02 中桥驱动装置 (i=4.8, XSΦ180, 输出XSΦ165, 铸造桥用) /Drive of 1st Rear Axle

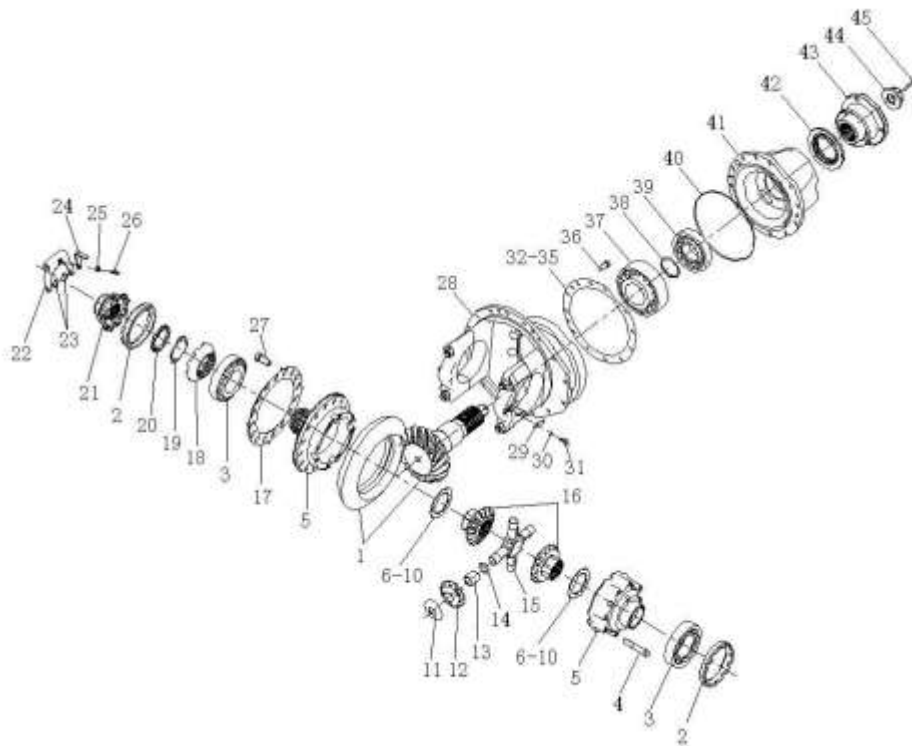


4.02 中桥驱动装置 (i=4.8, XSΦ180, 输出XSΦ165, 铸造桥用) /Drive of 1st Rear Axle

序号	零部件图号	名称	Part Name	数量	备注
----	-------	----	-----------	----	----

2	WG3809320159	差速器轴承调整螺母	Nut	2	
3	190003326148	圆锥滚子轴承32216GB/T	Tapered roller bearing	2	
4	WG9231320169	六角头螺栓	Bolt	8	
5	WG9231320274	差速器壳	Differential housing	1	
6	WG9231320154	调整垫片	Shim	1	
7	WG9231320155	调整垫片	Shim	1	
8	WG9231320156	调整垫片	Shim	1	
9	WG9231320157	调整垫片	Shim	1	
10	WG9231320158	调整垫片	Shim	1	
11	WG9231320153	行星齿轮垫片	Shim	4	
12	WG9231320152	行星齿轮	Gear	4	
13	WG9231320159	衬套	Bushing	4	
14	WG9231320160	衬套挡圈	Ring	4	
15	AZ9231320150	十字轴	Cross-axis	1	
16	WG9231320151	半轴齿轮	Gear	2	
17	WG9114320003	锁片-从动锥齿轮螺栓	Shim	1	
18	WG3809320155	固定啮合套	Sleeve	1	
19	WG3809320158	锁止垫片	Shim	1	

4.03 后桥驱动装置(i=4.8,XSΦ165,铸造桥用)/Drive of 2nd Rear Axle

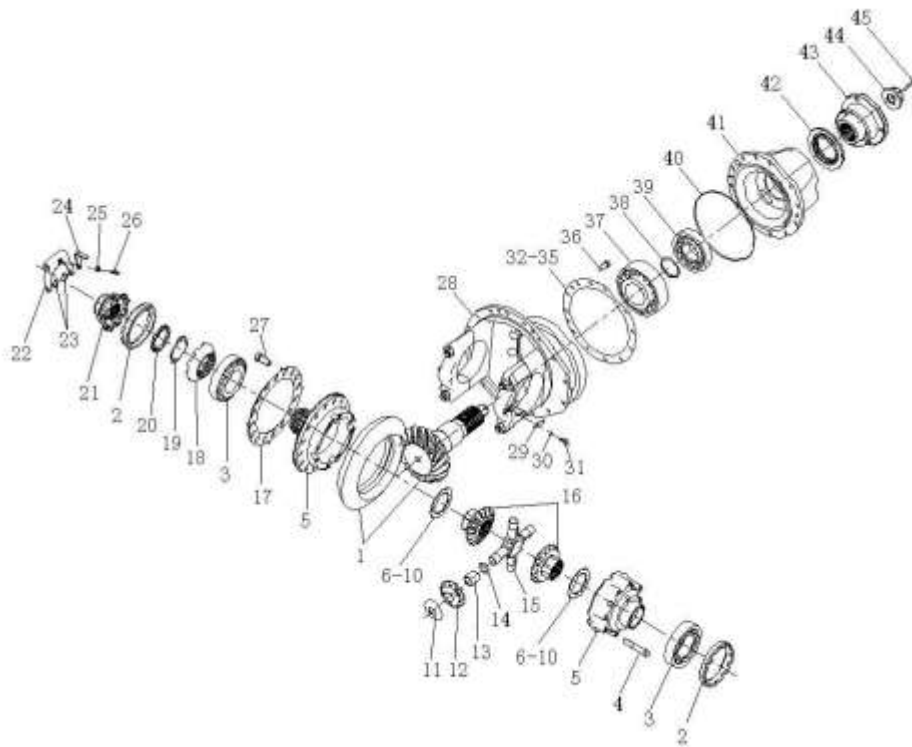


4.03 后桥驱动装置(i=4.8,XSΦ165,铸造桥用)/Drive of 2nd Rear Axle

序号	零部件图号	名称	Part Name	数量	备注
No.	Part No.			Qty	Remark
20	WG3809320157	圆螺母	Nut	1	
21	WG3809320156	滑动啮合套	Sleeve	1	
22	WG9012320014	拨叉	Fork	1	
23	WG1800320077	拨叉活动块	Block	2	

24	WG9231320023	弯板	Plate	1	
25	ZQ340B08	1型六角螺母M8	Hexagon nuts ,style 1	1	
26	Q2800825	开槽锥端紧定螺钉	Screw	1	
27	ZQ151B1635TF2	六角头螺栓M16*1.5*35	Hexagon head bolts	16	
28	199012320098	主减速器壳	Final drive housing	1	
29	WG79000320027	止动片	Shim	2	
30	Q40308	弹簧垫圈	Spring washer	2	
31	ZQ150B0816	六角头螺栓M8	Hexagon head bolts	2	
32	WG9012320173	调整垫片(厚0.1)	Shim	1	
33	WG9012320174	调整垫片(厚0.15)	Shim	1	
34	WG9012320175	调整垫片(厚0.4)	Shim	1	
35	WG9012320176	调整垫片(厚1)	Shim	1	
36	Q150B1230TF2	六角头螺栓	Bolt	12	
37	190003326546	圆锥滚子轴承32316GB/T	Tapered roller bearing	1	
38	AZ7121320001	调整垫片组	Shim	1	

4.03 后桥驱动装置(i=4.8,XSΦ165,铸造桥用)/Drive of 2nd Rear Axle

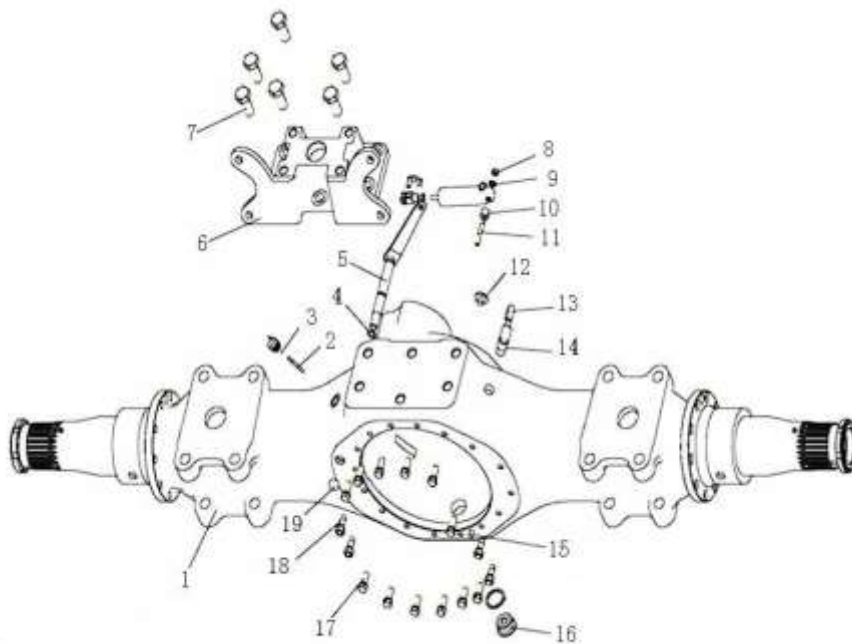


4.03 后桥驱动装置(i=4.8,XSΦ165,铸造桥用)/Drive of 2nd Rear Axle

序号	零部件图号	名称	Part Name	数量	备注
No.	Part No.			Qty	Remark
39	1,90003E+11	圆锥滚子轴承30312GB/T	Tapered roller bearing	1	
40	WG9012320133	密封圈	Gasket	1	
41	WG9012320131	轴承座	Bearing cage	1	
42	WG9231320001	主减油封总成	Oil seal	1	
43	WG9231320132	XS φ 165凸缘总成	XSφ165 Flange assembly	1	
44	WG79000320013	凸缘螺母	Nut	1	
45	Q5005055	开口销	Pin	1	

46	WG2297Y4835	铭牌	Name plate	1	
47	190003904529	标牌铆钉--铆钉GB827-86	Rivet	2	
48	190007991779	106号二硫化钼(MO)	Molybdenum disulfide	3	

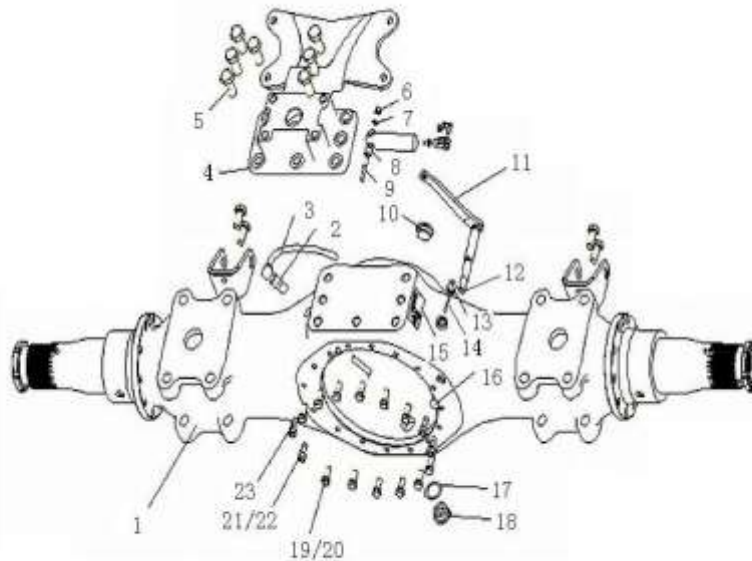
4.04 三段式铸造中桥壳(QT)(1850,断开式)/1st Rear Axle Housing



4.04 三段式铸造中桥壳(QT)(1850,断开式)/1st Rear Axle Housing

序号	零部件图号	名称	Part Name	数量	备注
No.	Part No.			Qty	Remark
1	AZ7121331990	三段式铸造中桥壳总成	1st rear tri-segmental castin	1	
2	WG9231330808	销	Pin	1	
3	Q43705	轴用钢丝挡圈	Circlip	1	
4	1680M 320015	O型垫圈	O-ring	1	
5	WG9014330126	操纵杆总成	Lever assembly	1	
6	WG9231340944	气室支架(中桥)	Bracket	1	
7	ZQ151B2045TF2	六角头螺栓M20*1.5*45	Hexagon head bolts M20*1	6	
8	Q33208	2型全金属六角锁紧螺母	Nut	1	
9	Q40108	平垫圈	Washer	1	
10	WG61000060084	间隔衬套	Bushing	1	
11	Q1200850F3	双头螺柱	Stud	1	

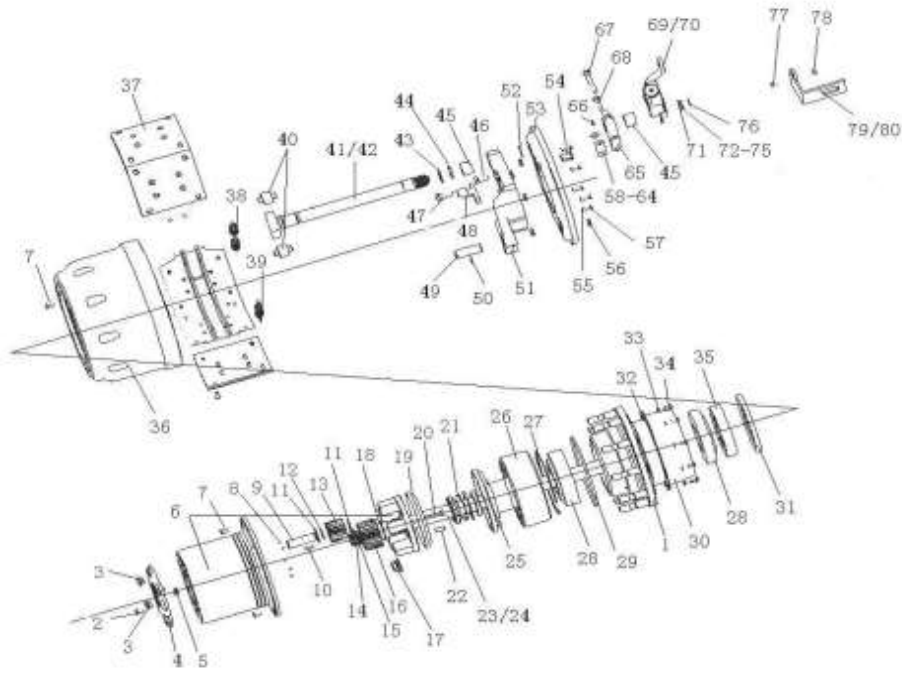
4.05 三段式铸造后桥壳(QT)(1850,断开式)/Rear Axle Housing



4.05 三段式铸造后桥壳(QT)(1850,断开式)/Rear Axle Housing

序号 No.	零部件图号 Part No.	名称	Part Name	数量 Qty	备注 Remark
1	AZ7121331948	三段式铸造后桥壳总成(QT)(1850,断开式)	REAR AXLE BEAM	1	
2	WG9231330105	通气塞	Breather	1	
3	WG9231330106	橡胶软管	Hose	1	
4	WG9231340943	气室支架(后桥)	Bracket	1	
5	ZQ151B2045TF2	六角头螺栓M20*1.5*45	Hexagon head bolts M20*1.5*45	7	
6	Q33208	2型全金属六角锁紧螺母	Nut	1	
7	Q40108	平垫圈	Washer	1	
8	WG61000060084	间隔衬套	Bushing	1	
9	Q1200850F3	双头螺柱	Stud	1	
10	WG81500010163	螺塞	Plug	1	
11	WG9014330125	操纵杆总成	Lever assembly	1	
12	1680M 320015	O型垫圈	O-ring	1	
13	Q43705	轴用钢丝挡圈	Circlip	1	
14	WG9231330808	销	Pin	1	
15	WG2297Y4835	铭牌	Name plate	1	
16	Q5211016	园柱销	Pin	1	
17	Q72336	密封垫圈—Q72336铝L1M, GB3190	Gasket	1	

4.06 三段式铸造中桥轮毂及制动器/Hub And Brake Of 1st Driving Axle

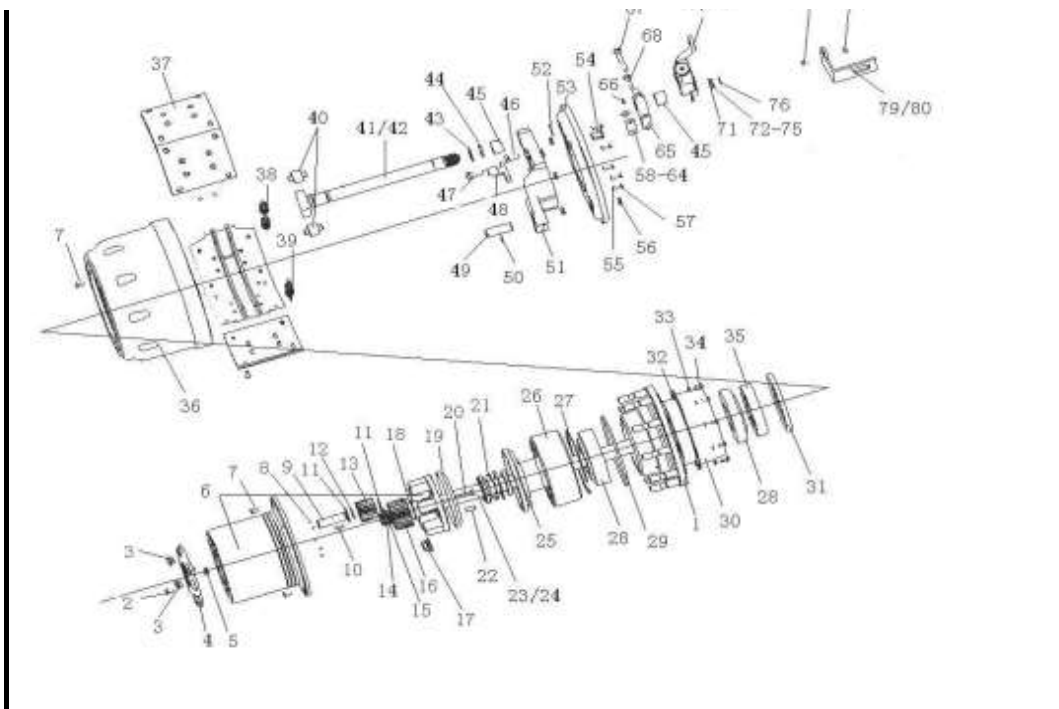


4.06 三段式铸造中桥轮毂及制动器/Hub And Brake Of 1st Driving Axle

序号	零部件图号	名称	Part Name	数量	备注
No.	Part No.			Qty	Remark
1	AZ9231340310	后轮毂总成	Rear wheel hub assembly	2	
1,1	WG9231340309	后轮毂	Rear wheel hub	1	
1,2	WG9112340123	车轮螺栓(后)	Wheel bolt	10	
2	Q150B1018	六角头螺栓	Bolt	20	
3	WG9231340002	圆柱头内六角螺塞总成	Plug	4	
4	WG9231340001	端盖	Cover	2	
5	WG9012340011	端盖顶销	Pin	2	
6	WG9231340329	行星架总成	Planetary gear frame assem	2	
7	Q2541025	十字槽沉头螺钉	Screw	8	
8	190003330148	钢球--8.0000 G200 b-G	Ball	10	
9	WG9012340004	行星轮轴	Shaft	10	
11	WG9012340075	行星轮垫片	Shim	20	
12	WG9012340077	垫圈	Washer	10	
13	WG9012340122	行星轮(Z=16)	Gear	10	
14	190003933351	轴用弹性挡圈	Circlip	2	
15	WG880 410097	垫圈	Washer	2	
16	WG9012340005	太阳轮 (Z=23)	Gear	2	
17	WG9003884160	车轮螺母	Wheel bolt	20	
18	WG9012340076	太阳轮垫圈	Washer	2	
19	WG880420027	行星架挡油盘	Oil shield	2	

4.06 三段式铸造中桥轮毂及制动器/Hub And Brake Of 1st Driving Axle

67 69/70 77 78

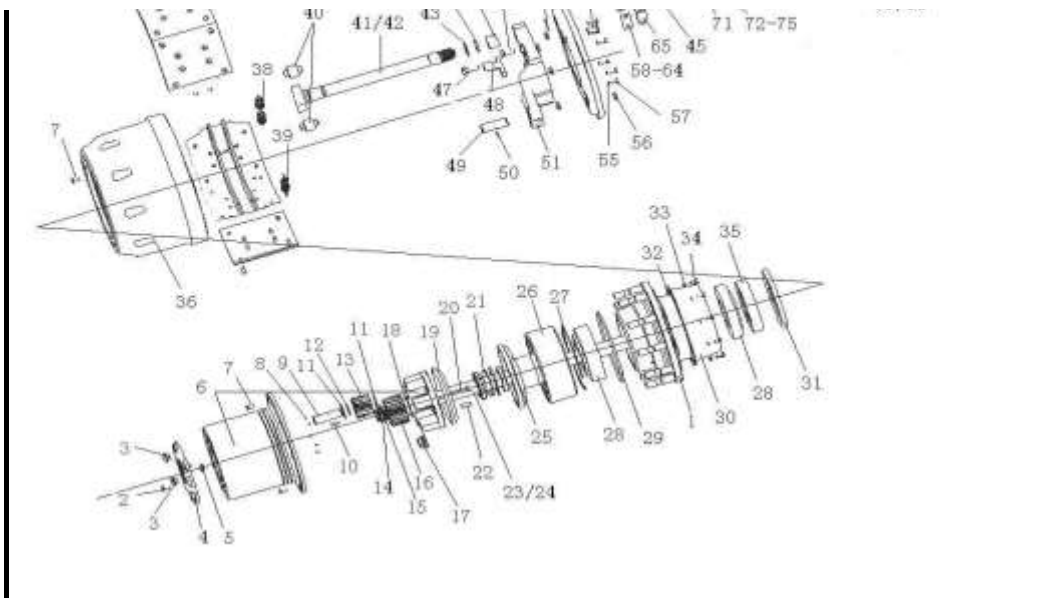


4.06 三段式铸造中桥轮毂及制动器/Hub And Brake Of 1st Driving Axle

序号 No.	零部件图号 Part No.	名称	Part Name	数量 Qty	备注 Remark
20	Q151C1295TF2	六角头螺栓	Bolt	10	
21	WG9231340016	锁止垫片	Shim	2	
22	190003901704	园柱销	Pin	10	
23	WG9231340223	半轴 (左)	Axle shaft	1	
24	WG9231340224	半轴 (右)	Axle shaft	1	
25	WG9112340021	齿圈支架总成	Bracket assembly	2	
26	WG9012340121	内齿圈 (Z=57)	Ring gear	2	
27	WG880420014	轴用挡圈	Circlip	2	
28	WG9981032222	圆锥滚子轴承32222	Tapered roller bearing	4	
29	WG9012340029	密封圈	Gasket	4	
30	WG9231340921	挡油罩	Oil shield	2	
31	WG9981340213	轴密封圈	Gasket	2	
32	WG9012340020	密封垫片	Gasket	2	
33	Q40308	弹簧垫圈	Spring washer	20	
34	Q150B0816	六角头螺栓	Bolt	20	
35	WG9231340317	隔圈	Spacer	2	
36	WG9231342006	后制动鼓	Brake drum	2	
37	AZ9231342072	制动蹄带衬片总成	Brake shoe & lining assem	4	
37.1	WG9231342071	制动蹄	Brake shoe	1	
37.2	WG9231342069	提升型制动摩擦片	Brake lining	2	

4.06 三段式铸造中桥轮毂及制动器/Hub And Brake Of 1st Driving Axle

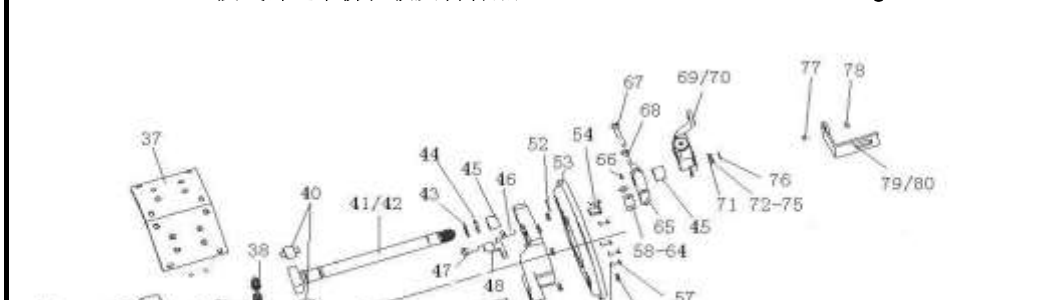


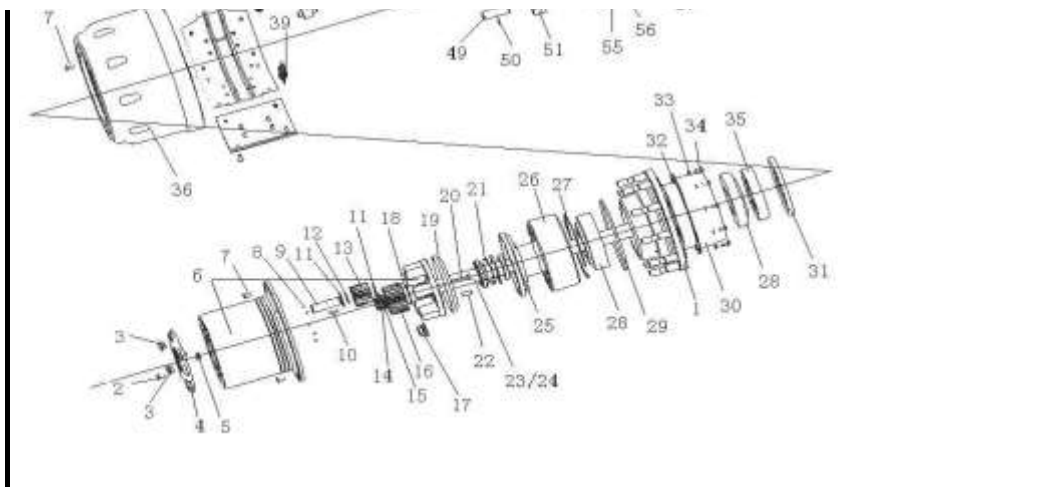


4.06 三段式铸造中桥轮毂及制动器/Hub And Brake Of 1st Driving Axle

序号	零部件图号	名称	Part Name	数量	备注
No.	Part No.			Qty	Remark
37,3	WG9231340068	铆钉	Rivet	28	
38	WG9981341006	回位弹簧	Spring	2	
39	WG9112340049	回位弹簧	Spring	4	
40	WG9000340027	滚轮	Roller	4	
41	WG9231340226	制动凸轮轴(左)	Brake camshaft	1	
42	WG9231340227	制动凸轮轴(右)	Brake camshaft	1	
43	WG880440010	附加垫片	Shim	4	
44	WG880340023	O形密封圈	O-ring	2	
45	WG9100340017	复合衬套	Bushing	4	
46	ZQ151B1635TF2	六角头螺栓	Bolt	16	
47	ZQ151B1645TF2	六角头螺栓	Bolt	4	
48	WG9231340957	ABS传感器支架	Bracket	2	
49	199000340064	支销	Pin	4	
50	Q5280624	弹性园柱销	Pin	4	
51	WG9231340560	制动底板	Brake plate	2	
52	190003933300	轴用弹性挡圈	Circlip	2	
53	WG9231342008	制动器防尘罩	Dust shield	2	
54	WG9112340010	ABS传感器输出保护套	Sleeve	2	
55	Q40308	弹簧垫圈	Spring washer	12	
56	WG880340037	密封圈	Gasket	8	

4.06 三段式铸造中桥轮毂及制动器/Hub And Brake Of 1st Driving Axle

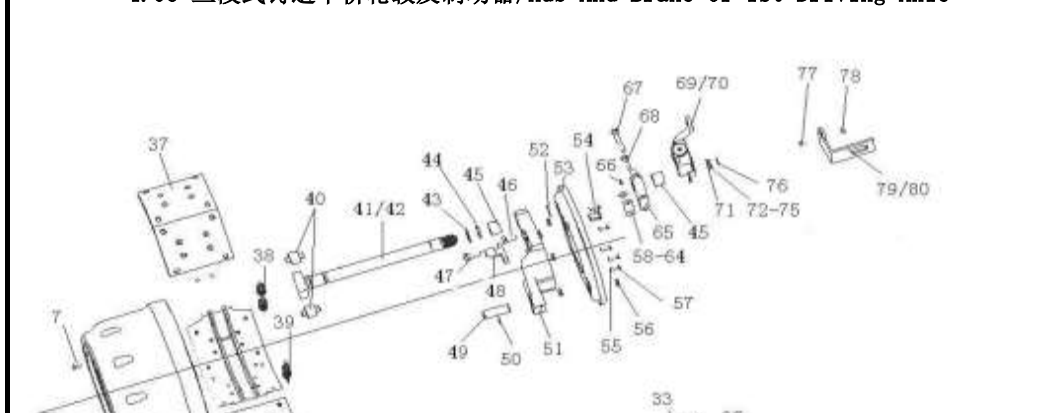


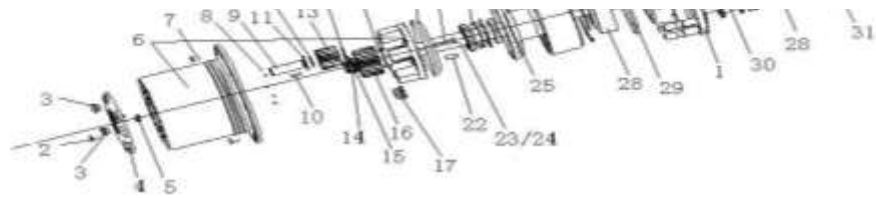


4.06 三段式铸造中桥轮毂及制动器/Hub And Brake Of 1st Driving Axle

序号 No.	零部件图号 Part No.	名称	Part Name	数量 Qty	备注 Remark
57	Q150B0816	六角头螺栓	Bolt	12	
58	WG880340031	调整垫片(厚0.1)	Shim	1	
59	WG880340032	调整垫片(厚0.15)	Shim	1	
60	WG880340033	调整垫片(厚0.4)	Shim	1	
61	WG880340034	调整垫片(厚1.0)	Shim	1	
62	WG3809470031	调整垫片	Shim	1	
63	WG3809470032	调整垫片	Shim	1	
64	WG3809470033	调整垫片	Shim	1	
65	199014340041	凸轮轴支架	Bracket	2	
66	AZ9003963030	滑脂嘴总成 (AM8*1 D71)	Grease nipple	2	
66.1	190003963112	米制锥螺纹滑脂嘴	Grease nipple	1	
66.2	AZ9003963010	滑脂嘴帽	Cap	1	
67	Q151B1490	六角头螺栓	Bolt	2	
68	Q151B1445	六角头螺栓	Bolt	2	
69	WG9100340060	刹车间隙自动调整臂(右)	Slack adjusting device(right)	1	
70	WG9100340061	刹车间隙自动调整臂(左)	Slack adjusting device(left)	1	
71	WG880340022	垫圈	Washer	2	
72	WG80 320028	调整垫圈	Washer	1	
73	WG80 320029	调整垫圈	Washer	1	
74	WG80 320030	调整垫圈	Washer	1	

4.06 三段式铸造中桥轮毂及制动器/Hub And Brake Of 1st Driving Axle

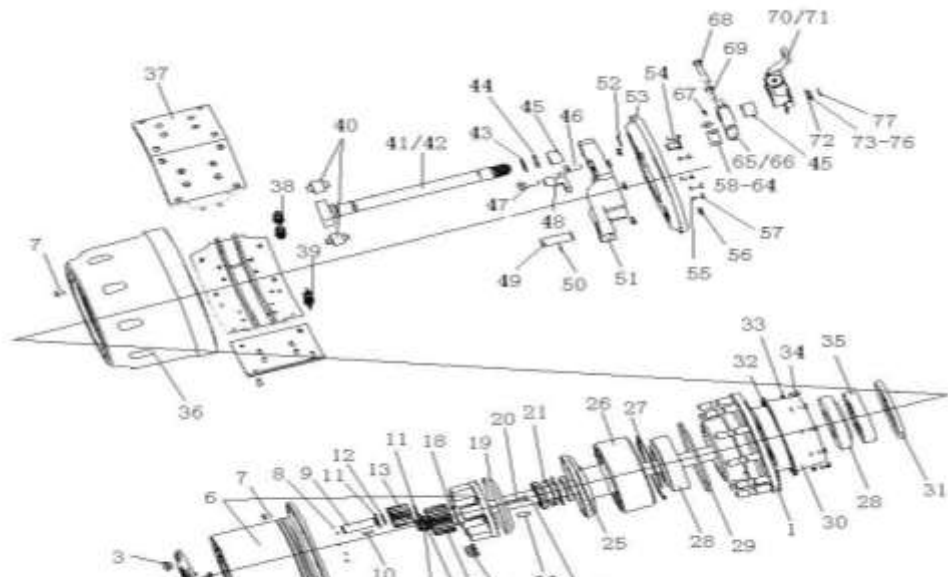




4.07 三段式铸造后桥轮毂及制动器ABS/Hub and Brake of Driving Axle ABS

序号 No.	零部件图号 Part No.	名称	Part Name	数量 Qty	备注 Remark
1	AZ9231340311	后轮毂总成 (ABS)	Rear wheel hub assembly	2	
1,1	AZ9231340310	后轮毂总成	Rear wheel hub assembly	1	
1.1.1	WG9231340309	后轮毂	Rear wheel hub	1	
1.1.2	WG9112340123	车轮螺栓(后)	Wheel bolt	10	
1,2	WG9231340908	ABS齿圈	Gear ring	1	
2	Q150B1018	六角头螺栓	Bolt	20	
3	WG9231340002	圆柱头内六角螺塞总成	Plug	4	
4	WG9231340001	端盖	Cover	2	
5	WG9012340011	端盖顶销	Pin	2	
6	WG9231340329	行星架总成	Planetary gear frame assem	2	
7	Q2541025	十字槽沉头螺钉	Screw	8	
8	190003330148	钢球--8.0000 G200 b-G	Ball	10	
9	WG9012340004	行星轮轴	Shaft	10	
11	WG9012340075	行星轮垫片	Shim	20	
12	WG9012340077	垫圈	Washer	10	
13	WG9012340122	行星轮(Z=16)	Gear	10	
14	190003933351	轴用弹性挡圈	Circlip	2	
15	WG880 410097	垫圈	Washer	2	
16	WG9012340005	太阳轮 (Z=23)	Gear	2	
17	WG9003884160	车轮螺母	Wheel bolt	20	

4.07 三段式铸造后桥轮毂及制动器ABS/Hub and Brake of Driving Axle ABS

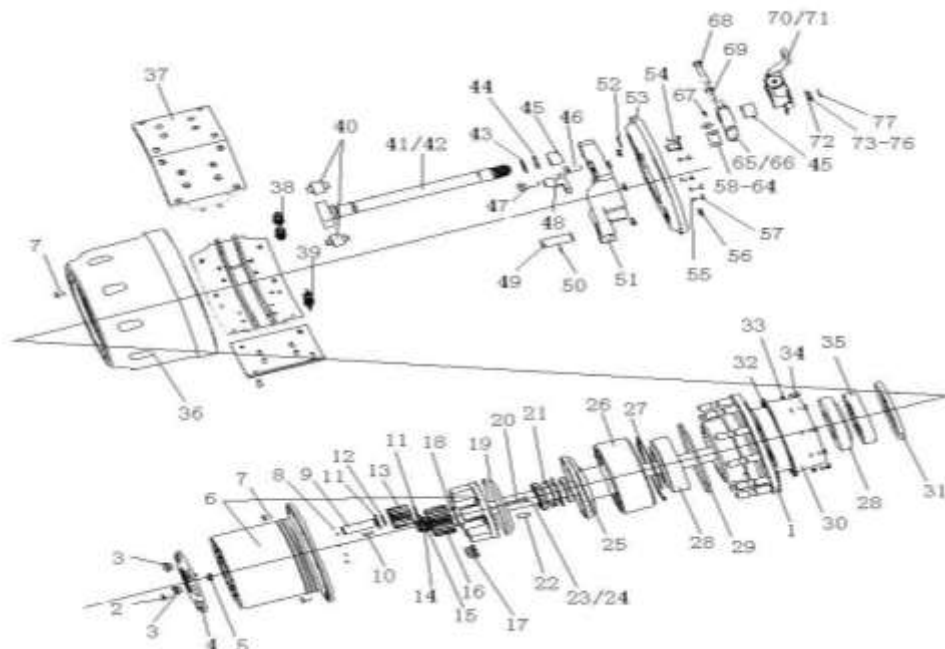




4.07 三段式铸造后桥轮毂及制动器ABS/Hub and Brake of Driving Axle ABS

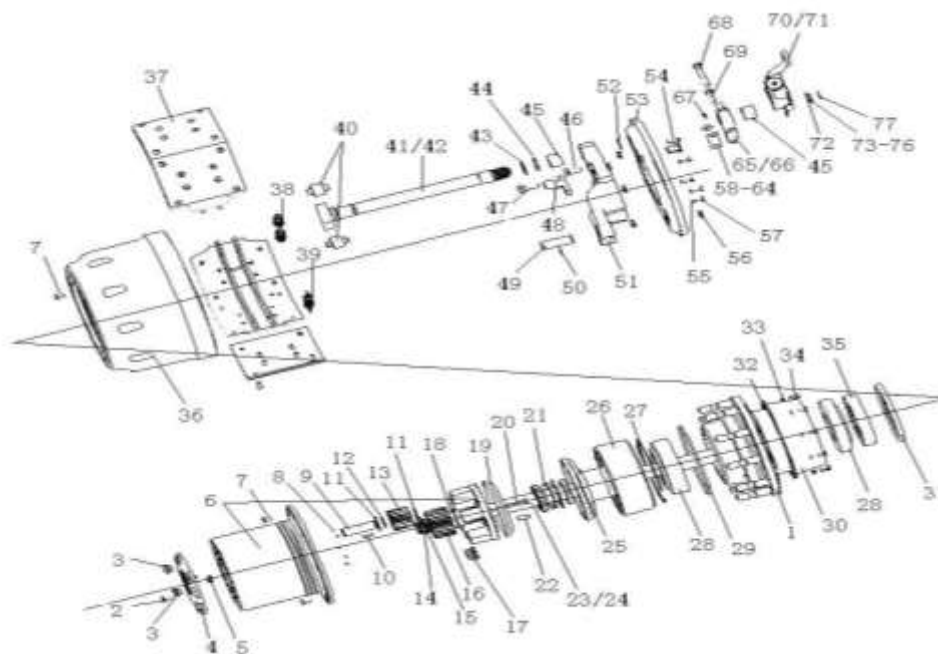
序号	零部件图号	名称	Part Name	数量	备注
No.	Part No.			Qty	Remark
18	WG9012340076	太阳轮垫圈	Washer	2	
19	WG880420027	行星架挡油盘	Oil shield	2	
20	Q151C1295TF2	六角头螺栓	Bolt	10	
21	WG9231340016	锁止垫片	Shim	2	
22	190003901704	园柱销	Pin	10	
23	WG9231340223	半轴(左)	Axle shaft	1	
24	WG9231340224	半轴(右)	Axle shaft	1	
25	WG9112340021	齿圈支架总成	Bracket assembly	2	
26	WG9012340121	内齿圈(Z=57)	Ring gear	2	
27	WG880420014	轴用挡圈	Circlip	2	
28	WG9981032222	圆锥滚子轴承32222	Tapered roller bearing	4	
29	WG9012340029	密封圈	Gasket	4	
30	WG9231340921	挡油罩	Oil shield	2	
31	WG9981340213	轴密封圈	Gasket	2	
32	WG9012340020	密封垫片	Gasket	2	
33	Q40308	弹簧垫圈	Spring washer	20	
34	Q150B0816	六角头螺栓	Bolt	20	
35	WG9231340317	隔圈	Spacer	2	
36	WG9231342006	后制动鼓	Brake drum	2	
37	AZ9231342072	制动蹄带衬片总成	Brake shoe & lining assembly	4	

4.07 三段式铸造后桥轮毂及制动器ABS/Hub and Brake of Driving Axle ABS



4.07 三段式铸造后桥轮毂及制动器ABS/Hub and Brake of Driving Axle ABS					
序号	零部件图号	名称	Part Name	数量	备注
No.	Part No.			Qty	Remark
37,1	WG9231342071	制动蹄	Brake shoe	1	
37,2	WG9231342069	提升型制动摩擦片	Brake lining	2	
37,3	WG9231340068	铆钉	Rivet	28	
38	WG9981341006	回位弹簧	Spring	2	
39	WG9112340049	回位弹簧	Spring	4	
40	WG9000340027	滚轮	Roller	4	
41	WG9231340226	制动凸轮轴(左)	Brake camshaft	1	
42	WG9231340227	制动凸轮轴(右)	Brake camshaft	1	
43	WG880440010	附加垫片	Shim	4	
44	WG880340023	O形密封圈	O-ring	2	
45	WG9100340017	复合衬套	Bushing	4	
46	ZQ151B1635TF2	六角头螺栓	Bolt	16	
47	ZQ151B1645TF2	六角头螺栓	Bolt	4	
48	WG9231340957	ABS传感器支架	Bracket	2	
49	199000340064	支销	Pin	4	
50	Q5280624	弹性园柱销	Pin	4	
51	WG9231340560	制动底板	Brake plate	2	
52	190003933300	轴用弹性挡圈	Circlip	2	
53	WG9231342008	制动器防尘罩	Dust shield	2	
54	WG9112340010	ABS传感器输出保护套	Sleeve	2	

4.07 三段式铸造后桥轮毂及制动器ABS/Hub and Brake of Driving Axle ABS

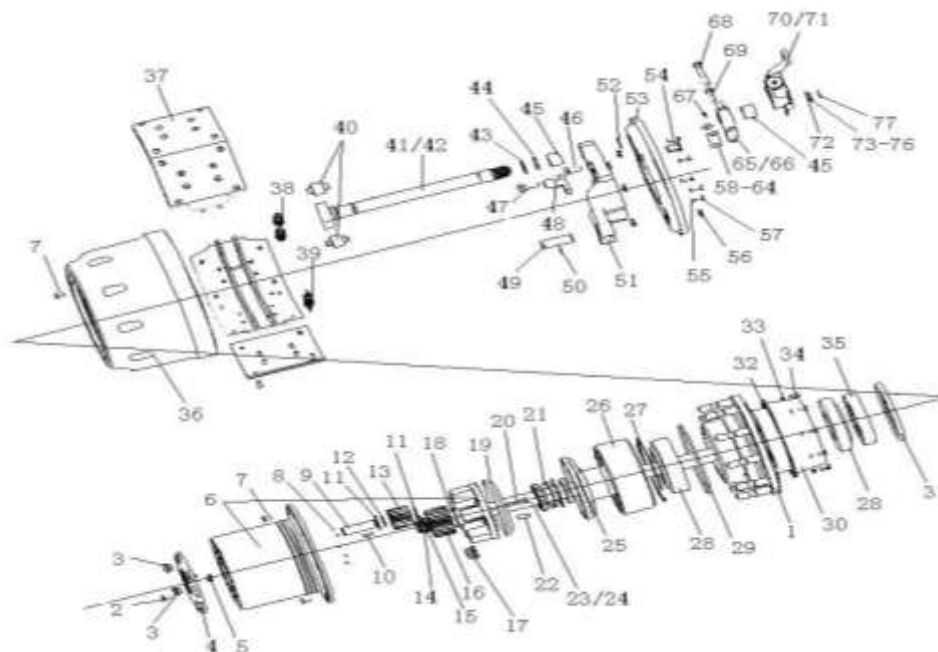


4.07 三段式铸造后桥轮毂及制动器ABS/Hub and Brake of Driving Axle ABS

序号	零部件图号	名称	Part Name	数量	备注
----	-------	----	-----------	----	----

No.	Part No.	名称	Part Name	Qty	Remark
55	Q40308	弹簧垫圈	Spring washer	12	
56	WG880340037	密封圈	Gasket	8	
57	Q150B0816	六角头螺栓	Bolt	12	
58	WG880340031	调整垫片(厚0.1)	Shim	1	
59	WG880340032	调整垫片(厚0.15)	Shim	1	
60	WG880340033	调整垫片(厚0.4)	Shim	1	
61	WG880340034	调整垫片(厚1.0)	Shim	1	
62	WG3809470031	调整垫片	Shim	1	
63	WG3809470032	调整垫片	Shim	1	
64	WG3809470033	调整垫片	Shim	1	
65	AZ9231340040	凸轮轴支架(左)	Bracket of camshaft	1	
66	AZ9231340039	凸轮轴支架(右)	Bracket of camshaft	1	
67	AZ9003963030	滑脂嘴总成 (AM8*1 D71)	Grease nipple	2	
67.1	190003963112	米制锥螺纹滑脂嘴	Grease nipple	1	
67.2	AZ9003963010	滑脂嘴帽	Cap	1	
68	Q151B1490	六角头螺栓	Bolt	2	
69	Q151B1445	六角头螺栓	Bolt	2	
70	WG9231340060	刹车间隙自动调整臂(右)	Slack adjusting device(left)	1	
71	WG9231340061	刹车间隙自动调整臂(左)	Slack adjusting device(right)	1	
72	WG880340022	垫圈	Washer	2	

4.07 三段式铸造后桥轮毂及制动器ABS/Hub and Brake of Driving Axle ABS



4.07 三段式铸造后桥轮毂及制动器ABS/Hub and Brake of Driving Axle ABS

序号	零部件图号	名称	Part Name	数量	备注
No.	Part No.			Qty	Remark
73	WG80 320028	调整垫圈	Washer	1	
74	WG80 320029	调整垫圈	Washer	1	

